

PRIALTEX s.r.l.

P-SR



SANFORIZING range

P-SR series main features

The PRIALTEX sanforizing machine production range is divided into three large families according to the kind of fabric to be treated (furthermore several options are available: WEKO, weft-straightener, while entry and exit can be customized according to customer needs):

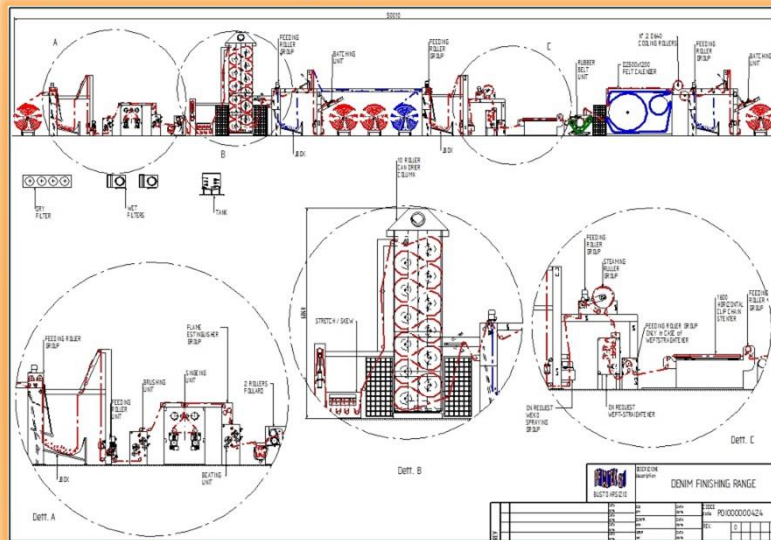
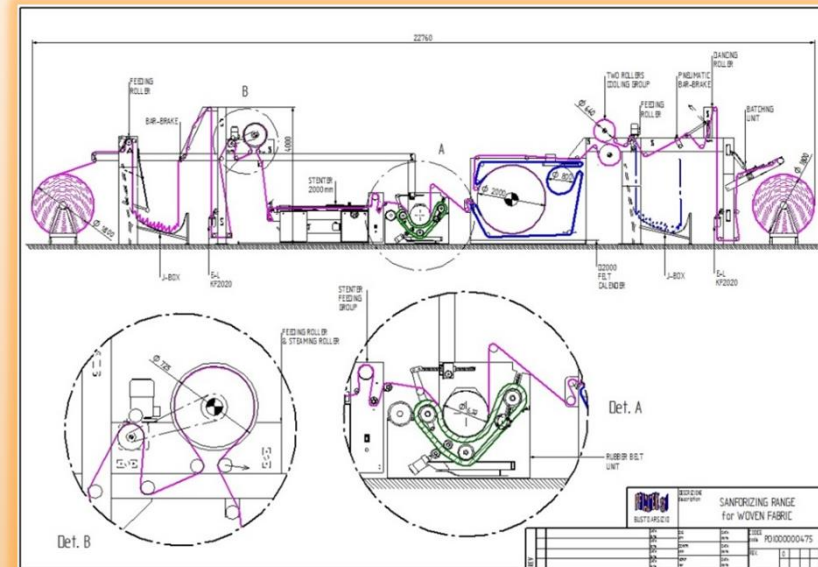
- “ Machines for woven fabric and denim
- “ Machine for knitted fabric
- “ Hybrid machines.

Typical configurations

On the right is the typical layout of a **woven fabric machine**.

On the drawing the following main components can be identified:

- “ Entry with manual bars-brake, feeding roller group and %b+box
- “ Entry frame complete with bar brake and fabric guiding system
- “ Feeding roller + Steaming roller group
- “ Stenter unit L=2000mm with feeding roller at the exit
- “ Rubber belt unit
- “ D2000x800 felt calender
- “ Two Cooling rollers + feeding roller group
- “ Exit %b+box with pneumatic dancing roller
- “ Exit frame with batching unit



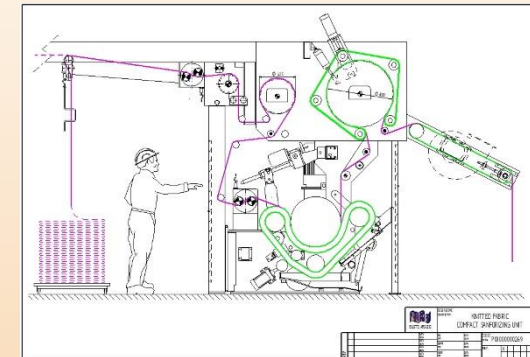
In case of **denim finishing plant**, together with sanforizing range, can be supplied also the preparation section:

- “ Entry with manual bars-brake, feeding roller group and %b+box
- “ Entry frame complete with bar brake and fabric guiding system
- “ Feeding roller
- “ Brushing unit
- “ Singeing machine
- “ Brushing unit
- “ Impregnation mangle (or washing chamber)
- “ Stretch / skew
- “ Can drier



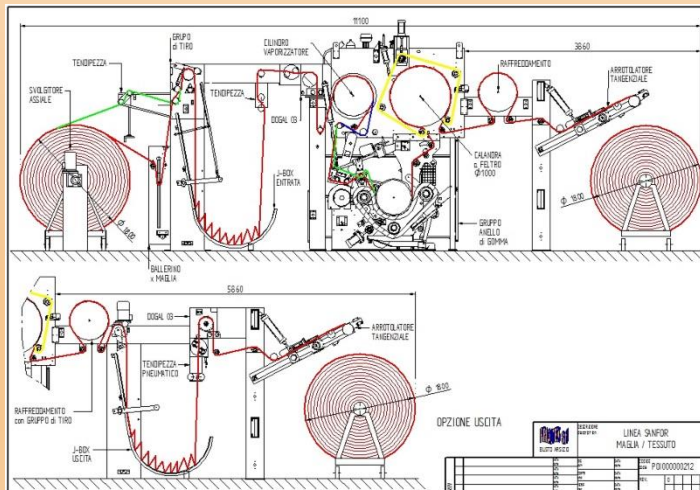
The **knitted fabric machine** has a very compact layout but includes all the fundamental elements for a perfect result.

- ” Entry with bar brake, motorized spreader rollers and centering device
- ” D400 steaming roller
- ” Rubber belt unit
- ” D640 felt calender
- ” Conveyor belt with air cooling
- ” Customizable exit



We also produce an **hybrid machine** able to work with both knitted and woven fabric.

It is characterized by oversized steaming roller and felt calender; furthermore it allows working with specific tensions for the treated article.



Process control

In all our machines the process is automatically controlled:

- ” Load cells for fabric tension control.
- ” PT100 for temperature control
- ” I/P converter for steam control
- ” Sensors for shrinking control

Stenter unit main features:

It is composed by one 2m long section (other lengths are available).

It is arranged to run with rameuse type clips chain (120mm of pitch) with carbon wear strips or with small clips (50mm of pitch).

The machine is placed over rails and can be moved to free space for rubber belt maintenance operations.

The chain correct draught and extensions recovering are obtained by cup springs.

All field movements are motorized and regulated by limit switches.

A feeding roller group is applied at the exit of the machine.

Rubber belt unit main features:

Carbon steel support frame (stainless steel on request).

D610mm main roller (steam heated) driven by suitable motor-gearbox; it is installed with high temperature bearings.

Three high-thickness rollers for rubber belt support: they are grinded, chromium plated and polished.

Two squeezing rollers (grinded, chromium plated and polished) with pneumatic movement.

Rubber belt compressing and tensioning made by means of UNIMEC motor-jacks.

Drops-burning pipe, spraying pipes for rubber belt cooling, stainless steel tank for water recovery.

Rubber belt grinding unit with an high diameter roller (dynamically balanced).

Felt calender unit main features:

Strong carbon steel frame.

D2000mm main roller (2500mm for denim)

D800mm felt drying roller (1200mm for denim)

6÷7 mm felt carpet

Pneumatic felt guiding and tensioning devices.

Chromium plated rollers for felt rotation.

Chromium-plated spreading pipe at machine entry

TECHNICAL SPECIFICATIONS

Fabric height	160 – 340 cm
Mechanical Speed	Up to 100 m/min
Driven system	Motors controlled by inverter

