

PRIALTEX s.r.l.

P-FA



Fast Ager x 2-phases Printing

P-FA series main features

The FAST AGER type P-FA is suitable for fixing both reactive or indanthrene (VAT) dyes in two-phase mode, with temperatures between 135°C and 145°C.

Several machine sizes are available: P-FA10, P-FA12 and P-FA18 (fabric capacity 10m, 12m, 18m respectively).

To extend reaction chamber fabric capacity, a different configuration with a double passage is also possible: P-FA10/18, P-FA 12/22, P-FA18/34
Entry and exit can be completely personalized in accordance with customer needs.

Standard Layout

Here at side a typical layout is represented. The following main components can be identified:

- ~ Impregnation mangle
- ~ Reaction chamber
- ~ Oxidation path

Impregnation Mangle

Horizontal mangle with two rollers.

The chromium plated driven roller works on fabric printed face, the rubber coated one works on fabric back face.

Pneumatic bellow to activate mangle pressure.

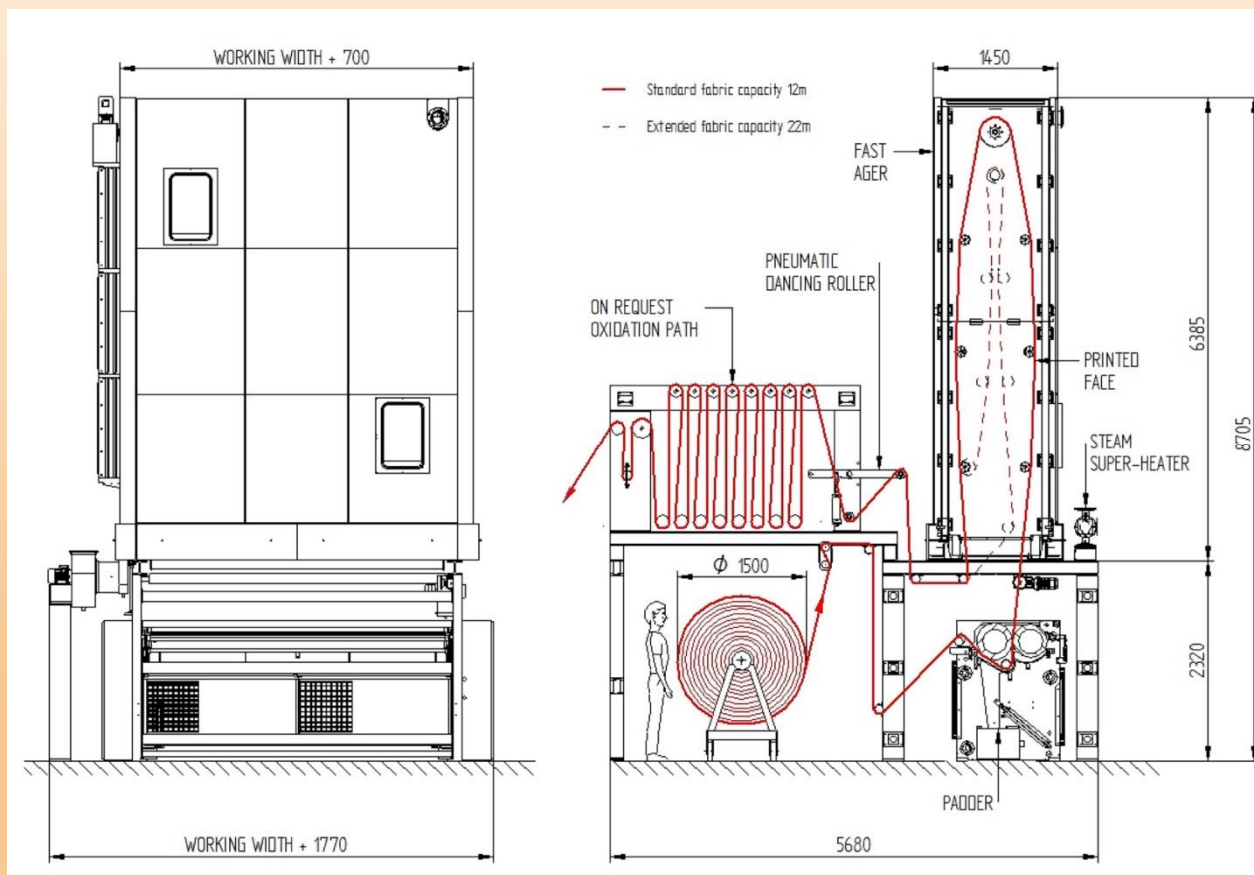
Doctor blade installed on the chromium plated roller.

A trough with two basins for chemicals, made in stainless steel AISI 304 and with a pneumatic system to raise and lower it.

The impregnation can take place by nipping (kiss system) or by dipping.

Chemical level sensor installed on both basins.

Chemical feeding pump. Feed and drain valves.



Reaction Chamber

Double-walls steaming chamber, made in 3 mm thickness stainless steel AISI 304, bended and enforced. Chamber is insulated with panels made in painted steel sheet containing high-density wool rock. Chamber is provide with doors for easy maintenance.

Roof made in 3 mm thickness stainless steel AISI 304 heated with pipe coils fed with steam and insulated with wool rock to avoid water drops.

To realize the fabric path, inside the chamber are installed one upper pulling roller and other driven rollers. All rollers are AISI 304 made.

AC Motor-gearbox drives the pulling roller, meanwhile the other rollers are driven by chains trasmission.

Rollers bearings are installed outside the chamber to easily perform their maintenance without enter in the chamber.

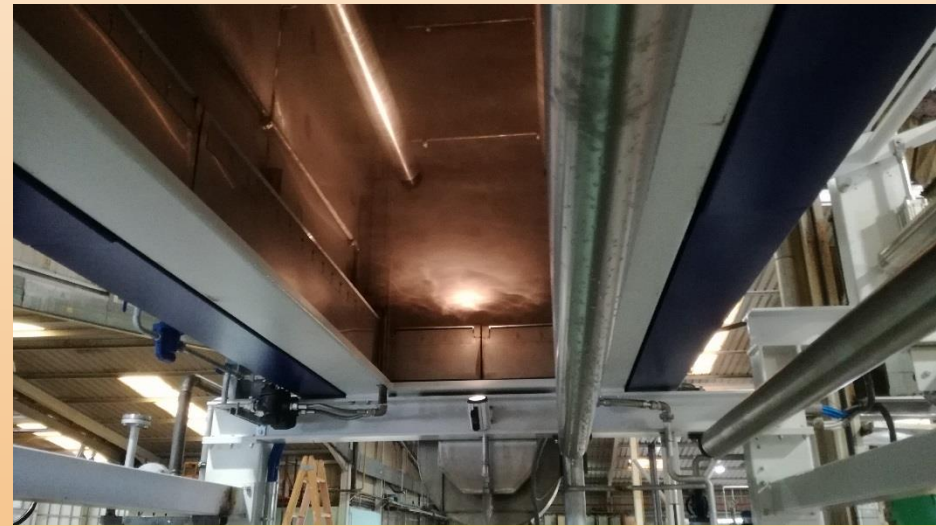
Driving chains are installed outside the chamber (with safety protections) to easily tension and maintenance them.

Automatic fabric feed device by means of stainless steel chain.

External electrical super-heater with PED certification; it is equipped with steam inlet/outlet temperature control and resistance max temperature control.

Steam exhaust fan made in stainless steel AISI 304.

Automatic steam flow control composed by: pneumatic valve, shut-off valves group, steam flow meter.



Oxidation path (Option)

After the steaming process, fabric need to be oxidized in air or with cold water and then washed off.

In case of air oxidation, a time looser (25/30m capacity) can be supplied.



TECHNICAL SPECIFICATIONS

Standard fabric capacity	10 – 12 – 18 m
Double passage fabric capacity	18 – 22 – 34 m
Roller Width	2200 – 2800 – 3600 mm
Working Width	1800 – 2400 – 3200 mm
Min-Max. fabric weight	70 – 700 g / m ²
Mechanical Speed	4-80 m/min
Fixation time indanthrene dyes	30 sec.
Fixation time reactive dyes	15 sec
Steam pressure	4 bar
Heating System	Electrical
Steam working temp.	135 – 145 °C
Driven system	Motors controlled by inverter
Machine conformity	CE

